

www.indiratrade.com



MONDAY

CURRENCY COMMODITIES

WEEKLY REPORT
08 APR 2019 TO 12 APR 2019

EDGE



INDIRA SECURITIES PVT. LTD.



WEEKLY INDICES CHANGES

INDEX	CLOSE	PREV. CLOSE	Change (%)
SENSEX	38862.23	38672.91	0.49%
NIFTY	11666	11623.9	0.36%
DOW	26425	25928.7	1.91%
NASDAQ	7938.69	7729.32	2.71%
FTSE	7446.87	7279.19	2.30%
NIKKEI	21807.5	21205.8	2.84%
DAX	12009.8	11526	4.20%
CAC	5476.2	5350.53	2.35%

SS

Market Round Up:

- **Forex - U.S. Dollar Flat as Wage Inflation Supports Fed Rate Pause:** - The greenback remained unchanged on Friday as wage inflation in the U.S. supported the Federal Reserve's pause on interest rate hikes.
- **Nonfarm payrolls rose more than expected, but average hourly earnings grew at a slower pace than anticipated, indicating that inflation pressure has decreased.** The numbers support the Fed's decision to extend its pause on hiking rates.
- **Meanwhile, trade talks were in focus, as the U.S. and China conceded that progress had been made.** Still, the U.S. President Donald Trump declined to announce a trade summit with Chinese leader Xi Jinping, saying it would be at least four or more weeks until a trade deal was signed.
- **Rebound in job growth pushes Wall Street higher, trade hopes add to optimism:** - Wall Street's main indexes rose on Friday after data showed U.S. employment in March accelerated from a 17-month low, easing concerns of a domestic slowdown, while hopes of a U.S.-China trade deal added to the sentiment.
- **The Labor Department report showed nonfarm payrolls rose by 196,000 jobs last month, above economists' estimate of 180,000, as milder weather boosted hiring in sectors like construction.**

RBI REFERENCE RATE

INDEX	CLOSE	PREV. CLOSE
USDINR	69.1965	69.1713
EURINR	77.7317	77.7024
JPYINR	61.9600	62.5200
GBPINR	90.6354	90.4756

FII FIGURES

DATE	FII FIGURES IN CRORE
01/04	899
02/04	543
03/04	-1040
04/04	-226
05/04	798
NET	+973

DII FIGURES

DATE	DII FIGURES IN CRORE
01/04	-1033
02/04	-438
03/04	-81
04/04	1206
05/04	-326
NET	-670



DOLLAR INDEX CHART



US Dollar Index	
RSI(14)	BUY
STOCH(9,6)	BUY
STOCHRSI(14)	BUY
MACD(12,26)	BUY
ADX(14)	BUY
Williams %R	BUY
CCI(14)	BUY
Highs/Lows(14)	BUY
Ultimate Oscillator	BUY
ROC	BUY
BUY	9
SELL	0
NEUTRAL	0
SUMMARY	STRONG BULLISH

USDINR TECHNICAL CHART (INDIAN RUPEE)



USDINR.Rolling	
RSI(14)	SELL
STOCH(9,6)	BUY
STOCHRSI(14)	BUY
MACD(12,26)	SELL
ADX(14)	BUY
Williams %R	NETURAL
CCI(14)	SELL
Highs/Lows(14)	0
Ultimate Oscillator	BUY
ROC	SELL
	SELL
BUY	4
SELL	5
NEUTRAL	1
SUMMARY	NETURAL



DOMESTIC CURRENCY

Domestic	S2	S1	PIVOT	R1	R2
USDINR	68.46	68.99	69.31	69.84	70.16
EURINR	77.6	77.95	78.23	78.58	78.85
GBPINR	89.95	90.62	91.2	91.87	92.45
JPYINR	61.77	62.32	62.82	63.37	63.86

GLOBAL CURRENCY

Global	S2	S1	PIVOT	R1	R2
DOLLAR INDEX	96.06	96.63	96.99	97.56	97.92
EURUSD	1.12	1.12	1.13	1.13	1.14
GBPUSD	1.29	1.3	1.31	1.32	1.34
USDJPY	109.29	109.86	110.26	110.83	111.23

CURRENCY PERFORMANCE

CURRENCY	CLOSE PRICE	DAY	WEEK	MONTHLY	YEARLY
EURO	1.1213	-0.06%	-0.04%	-0.81%	-8.70%
POUND	1.30346	-0.32%	0.03%	-1.02%	-7.49%
AUSTRALIAN DOLLAR	0.71011	-0.14%	0.10%	0.98%	-7.48%
NEWZEALAND DOLLAR	0.67256	-0.38%	-1.12%	-0.61%	-7.39%
YEN	111.69	0.03%	0.77%	-0.06%	4.47%
YUAN	6.69876	-0.25%	-0.35%	-0.25%	6.13%
SWISS FRANC	1.00001	0.04%	0.48%	-0.48%	4.28%
CANADIAN DOLLAR	1.33805	0.17%	0.27%	-0.44%	4.68%
MEXICAN PESO	19.065	-0.43%	-1.84%	-1.52%	4.30%
INDIAN RUPEE	69.16	0.28%	-0.03%	-1.30%	6.53%
BRAZILIAN REAL	3.8738	0.39%	-1.27%	0.89%	14.99%
RUSSIAN RUBBLE	65.4325	0.03%	-0.36%	-0.72%	12.54%
DOLLAR INDEX	97.39	0.09%	0.11%	0.54%	7.99%
KORREAN WON	1137.28	0.13%	0.10%	0.88%	6.31%
SOUTH AFRICAN RAND	14.0722	-0.34%	-2.83%	-1.34%	17.07%
SINGAPORE DOLLAR	1.35445	-0.03%	-0.08%	-0.21%	2.97%
HONGKONG DOLLAR	7.84912	0.00%	0.00%	-0.01%	0.01%

COMMODITIES

FUNDAMENTAL OF COMMODITIES

MAJOR COMMODITIES

MCX ENERGY WEEKLY

Commodity	S2	S1	Pivot	R1	R2
Crude oil	3959.7	4072.3	4143.7	4256.3	4327.7
Natural Gas	183.0	184.8	188.3	190.1	193.6

MCX BASE METAL WEEKLY

Commodity	S2	S1	Pivot	R1	R2
Copper	428.2	439.6	445.6	457.1	463.1
Zinc	191.0	199.2	203.4	211.6	215.8
Lead	134.8	137.3	138.7	141.2	142.5
Nickel	867.2	883.6	897.2	913.6	927.2

PRECIOUS METAL WEEKLY

Commodity	S2	S1	Pivot	R1	R2
Gold	31080.7	31407.3	31826.7	32153.3	32572.7
Silver	36544.3	37152.7	37887.3	38495.7	39230.3

International Commodity	S2	S1	Pivot	R1	R2	CMP	PREV CLOSE
Gold COMEX	\$1,267.00	\$1,283.00	\$1,304.00	\$1,320.00	\$1,341.00	\$1,294.00	\$1,299.00
SILVER COMEX	14.58	14.84	15.22	15.48	15.86	15.08	15.11
NYMEX CRUDE	57.12	58.63	59.68	61.19	62.24	62.1	60.14
BRENT CRUDE	64.91	66.26	67.28	68.63	69.65	69.29	67.6

Updates:

- Saudi Arabia Threatens to Drop Dollar for Oil Trades: - Saudi Arabia has threatened the United States to stop using dollars for its oil trades in an attempt to discourage legislators from passing a bill dubbed NOPEC aimed at holding OPEC liable for cartel practices under U.S. law.
- Reuter's reports, citing unnamed sources, that the switch from U.S. dollars to other currencies had been discussed in senior Saudi circles and that it had also been shared with U.S. government officials from the energy department.
- Gold Falls as Labor Market Bounces Back: - Gold prices were lower on Friday after the U.S. added more jobs than expected in March, easing concerns on the health of the economy, even as hourly wages stagnant.



COMMODITIES

MAJOR COMMODITIES

Commodity Major	Price	Day	Weekly	Monthly	Yearly
Crude Oil	63.2225	1.87%	5.13%	12.46%	1.87%
Brent	70.3373	1.48%	2.85%	6.59%	4.81%
Natural gas	2.6733	1.36%	0.42%	-5.90%	-1.03%
Gold	1293.92	-0.06%	0.16%	0.59%	-2.92%
Silver	15.1211	-0.16%	-0.09%	0.33%	-7.50%
Platinum	895	-0.29%	5.85%	8.26%	-3.92%
Palladium	1370	0.29%	-0.98%	-10.94%	52.14%
Copper	2.8816	-0.77%	-1.85%	-1.27%	-5.65%
Lead	1965	-0.37%	-1.92%	-5.71%	-17.81%
Aluminum	1890	-1.15%	-0.68%	0.85%	-7.44%
Tin	21000	-1.87%	-1.96%	-2.62%	-0.24%
Zinc	2922	-0.03%	1.92%	5.11%	-9.59%



MCX GOLD CHART



Commodity	S2	S1	Pivot	R1	R2
Gold	31080.7	31407.3	31826.7	32153.3	32572.7

GOLD TECHNICAL INDICATOR	
RSI(14)	SELL
STOCH(9,6)	BUY
STOCHRSI(14)	BUY
MACD(12,26)	SELL
ADX(14)	SELL
Williams %R	SELL
CCI(14)	SELL
Highs/Lows(14)	BUY
Ultimate Oscillator	SELL
ROC	SELL
BUY	3
SELL	7
NEUTRAL	0
SUMMARY	STRONG BEARISH

GOLD INTERNATIONAL CHART



Commodity	S2	S1	Pivot	R1	R2
Gold	\$1,267.0	\$1,283.0	\$1,304.0	\$1,320.0	\$1,341.0

GOLD INTERNATIONAL TECHNICAL INDICATOR	
RSI(14)	BUY
STOCH(9,6)	BUY
STOCHRSI(14)	BUY
MACD(12,26)	SELL
ADX(14)	BUY
Williams %R	NETURAL
CCI(14)	SELL
Highs/Lows(14)	BUY
Ultimate Oscillator	SELL
ROC	BUY
BUY	5
SELL	3
NEUTRAL	1
SUMMARY	MILD BULLISH



MCX SILVER CHART



Commodity	S2	S1	Pivot	R1	R2
Silver	36544.3	37152.7	37887.3	38495.7	39230.3

SILVER TECHNICAL INDICATOR	
RSI(14)	BUY
STOCH(9,6)	BUY
STOCHRSI(14)	BUY
MACD(12,26)	BUY
ADX(14)	SELL
Williams %R	BUY
CCI(14)	BUY
Highs/Lows(14)	BUY
Ultimate Oscillator	BUY
ROC	BUY
BUY	2
SELL	8
NEUTRAL	0
SUMMARY	STRONG BEARISH

SILVER INTERNATIONAL CHART



Commodity	S2	S1	Pivot	R1	R2
Silver	\$14.6	\$14.8	\$15.2	\$15.5	\$15.9

SILVER INTERNATIONAL TECHNICAL INDICATOR	
RSI(14)	SELL
STOCH(9,6)	SELL
STOCHRSI(14)	SELL
MACD(12,26)	SELL
ADX(14)	SELL
Williams %R	SELL
CCI(14)	SELL
Highs/Lows(14)	BUY
Ultimate Oscillator	SELL
ROC	SELL
BUY	1
SELL	9
NEUTRAL	0
SUMMARY	STRONG BEARISH



MCX COPPER CHART

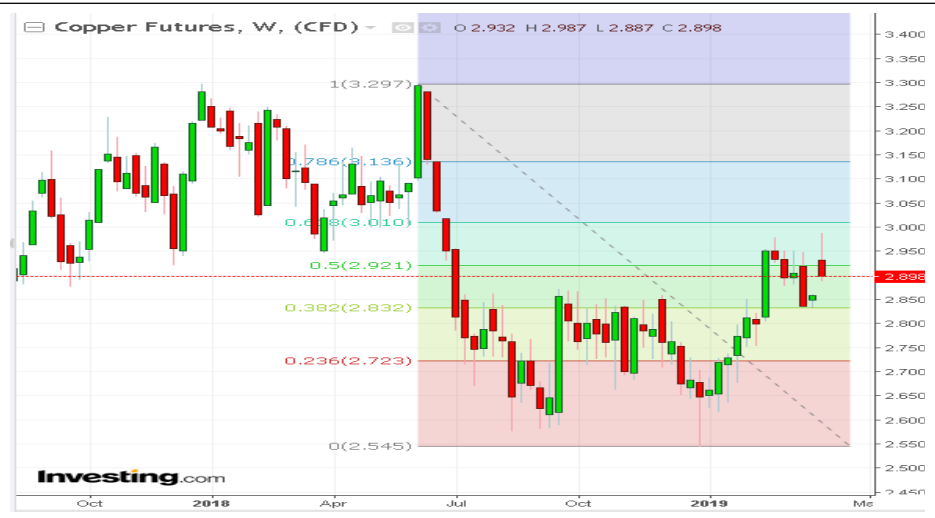


Commodity	S2	S1	Pivot	R1	R2
Copper	428.2	439.6	445.6	457.1	463.1

COPPER TECHNICAL INDICATOR

RSI(14)	BUY
STOCH(9,6)	SELL
STOCHRSI(14)	BUY
MACD(12,26)	BUY
ADX(14)	SELL
Williams %R	NETURAL
CCI(14)	BUY
Highs/Lows(14)	BUY
Ultimate Oscillator	BUY
ROC	BUY
BUY	6
SELL	2
NEUTRAL	1
SUMMARY	MILD BULLISH

COPPER INTERNATIONAL CHART



Commodity	S2	S1	Pivot	R1	R2
Copper	\$2.790	\$2.870	\$2.900	\$2.980	\$3.020

COPPER INTERNATIONAL TECHNICAL INDICATOR

RSI(14)	BUY
STOCH(9,6)	SELL
STOCHRSI(14)	SELL
MACD(12,26)	BUY
ADX(14)	SELL
Williams %R	BUY
CCI(14)	BUY
Highs/Lows(14)	BUY
Ultimate Oscillator	SELL
ROC	BUY
BUY	5
SELL	4
NEUTRAL	0
SUMMARY	MILD BULLISH



MCX CRUDE CHART



Commodity	S2	S1	Pivot	R1	R2
Crude oil	3959.7	4072.3	4143.7	4256.3	4327.7

CRUDEOIL TECHNICAL INDICATOR	
RSI(14)	BUY
STOCH(9,6)	BUY
STOCHRSI(14)	BUY
MACD(12,26)	BUY
ADX(14)	SELL
Williams %R	BUY
CCI(14)	BUY
Highs/Lows(14)	BUY
Ultimate Oscillator	BUY
ROC	BUY
BUY	8
SELL	1
NEUTRAL	0
SUMMARY	STRONG BULLISH

NYMEX CRUDE CHART



Commodity	S2	S1	Pivot	R1	R2
Crude oil	\$57.1	\$58.6	\$59.7	\$61.2	\$62.2

CRUDE.OILNYM TECHNICAL INDICATOR	
RSI(14)	BUY
STOCH(9,6)	BUY
STOCHRSI(14)	BUY
MACD(12,26)	BUY
ADX(14)	SELL
Williams %R	BUY
CCI(14)	BUY
Highs/Lows(14)	BUY
Ultimate Oscillator	BUY
ROC	BUY
BUY	8
SELL	1
NEUTRAL	0
SUMMARY	STRONG BULLISH



MCX NATURAL GAS



Commodity	S2	S1	Pivot	R1	R2
Natural Gas	183.0	184.8	188.3	190.1	193.6

NATURALGAS TECHNICAL INDICATOR	
RSI(14)	SELL
STOCH(9,6)	SELL
STOCHRSI(14)	SELL
MACD(12,26)	SELL
ADX(14)	BUY
Williams %R	SELL
CCI(14)	SELL
Highs/Lows(14)	BUY
Ultimate Oscillator	SELL
ROC	SELL
BUY	2
SELL	8
NEUTRAL	0
SUMMARY	STRONG BEARISH

NATURAL GAS INTERNATIONAL



Commodity	S2	S1	Pivot	R1	R2
Natural Gas	\$2.570	\$2.620	\$2.700	\$2.750	\$2.830

NATURAL GAS INTER. TECHNICAL INDICATOR	
RSI(14)	SELL
STOCH(9,6)	SELL
STOCHRSI(14)	SELL
MACD(12,26)	SELL
ADX(14)	BUY
Williams %R	SELL
CCI(14)	SELL
Highs/Lows(14)	BUY
Ultimate Oscillator	SELL
ROC	SELL
BUY	2
SELL	8
NEUTRAL	0
SUMMARY	STRONG BEARISH

IMP ECONOMOIC DATA TO WATCH FOR THE WEEK

DATE	TIME	CURRENCY	ECONOMIC DATA	FORECAST	PREVIOUS
MonApr 8					
TueApr 9					
WedApr 10	4:15am	USD	FOMC Member Clarida Speaks		
	2:00pm	GBP	GDP m/m	0.20%	0.50%
		GBP	Manufacturing Production m/m	0.20%	0.80%
	5:15pm	EUR	Main Refinancing Rate	0.00%	0.00%
		EUR	Monetary Policy Statement		
	6:00pm	EUR	ECB Press Conference		
		USD	CPI m/m	0.30%	0.20%
		USD	Core CPI m/m	0.20%	0.10%
	9:20pm	USD	FOMC Member Quarles Speaks		
	11:30pm	USD	FOMC Meeting Minutes		
ThuApr 11	7:00am	CNY	CPI y/y	2.40%	1.50%
	All Day	All	OPEC Meetings		
	6:00pm	USD	PPI m/m	0.30%	0.10%
		USD	Core PPI m/m	0.20%	0.10%
	7:00pm	USD	FOMC Member Clarida Speaks		
	7:10pm	USD	FOMC Member Bullard Speaks		
FriApr 12	1:30am	USD	FOMC Member Bowman Speaks		
	Tentative	CNY	Trade Balance	2B	34B
	7:30pm	USD	Prelim UoM Consumer Sentiment	98.1	98.4
SatApr 13	Tentative	USD	Treasury Currency Report		



204 Amardarshan Building 3rd floor Saket Nagar , Indore-452018

Call: 0731-4797170-173 **Mob:** +91-9303172345 / **Toll Free:** 18001030059 / **SMS:** <INDIRA> to 56070

DISCLAIMER

This report is for private circulation within the Indira Group. This report is strictly confidential and for information of the selected recipient only and may not be altered in any way, transmitted to, copied or distributed, in part or in whole, to any other person or to the media or reproduced in any form. This report should not be construed as an offer or solicitation to buy or sell any securities or any interest in securities. It does not constitute a personal recommendation or take into account the particular investment objectives, financial situations, or any such factor. The information, opinions estimates and forecasts contained here have been obtained from, or are based upon, sources we believe to be reliable, but no representation of warranty, express or implied, is made by us to their accuracy or completeness. Opinions expressed are our current opinions as of our current opinions as of the data appearing on this material only and are subject to change without notice.